

# bbq-donut®

THE PARTY STARTS MOVING



10  
YEARS



50  
COUNTRIES



## Welcome!

Here we have compiled the most important information around the **bbq-donut®**

You request a specially tailored offer to your needs? Contact us by  
Phone **+49 (0) 54 59 / 97 29 71 13** or  
E-Mail: **s.schmitt@artthink.de**

**We look forward to get in contact with you!**

**Create your own bbq-donut® Type2 success story!**

**Learn how on the following slides.**



# Content

Preamble	.....	3
bbq-donut® Type 1	.....	4
Around the Globe	.....	5
Events on the Water	.....	6
Technical Detail	.....	7-8
Measured Views	.....	9
Model Range	.....	10
Seral Delivery	.....	11
Smart Accessories	....	12-15
Safety and Authorization	.....	16
Maintenance and Service	.....	17
Our Team	.....	17
Contact	.....	18



Find us on facebook!

**10** YEARS  **50** COUNTRIES



# Around the Globe!

**From Möhnesee in North Rhine-Westphalia (Germany) to Caribbean islands:**

**On all continents and in over 40 countries the bbq-donut® is already successfully used on the water.**

Basically the bbq-donut® should be used where pedal boats are available. However, it is also possible to use the bbq-donut® near the beach and in harbors or bays.

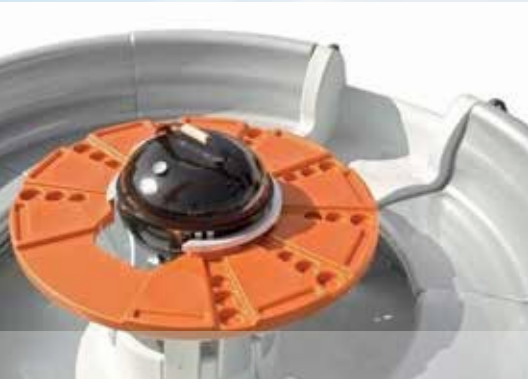
**Both of our commercial and private clients are very satisfied with their bbq-donut®!**

- Boatrentals
- Amusement parks
- Lakes
- Campgrounds
- Eventagencies
- Hotels and restaurants with direct water access
- Private Persons all over the world who want to have fun on the water with family and friends



# Discover our Variety!

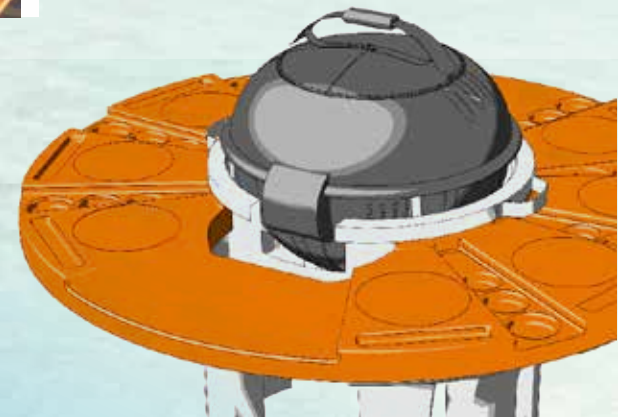
**Grill**



**Beverage Bowl**



**Tabletop**



## Authorization

Often we are asked if a round boat can also go straight. This is possible because of the 4 integrated lanes on the bottom of the main floating body. The bbq-donut® is easy and well to maneuver. Even people who have little experience in driving boats will have no problems driving it. This confirms the worldwide use of bbq-donut® as a rental boat. The bbq-donut® can be operated in the water categories C and D. The serial engines all have less than 6 hp, so no license is required.

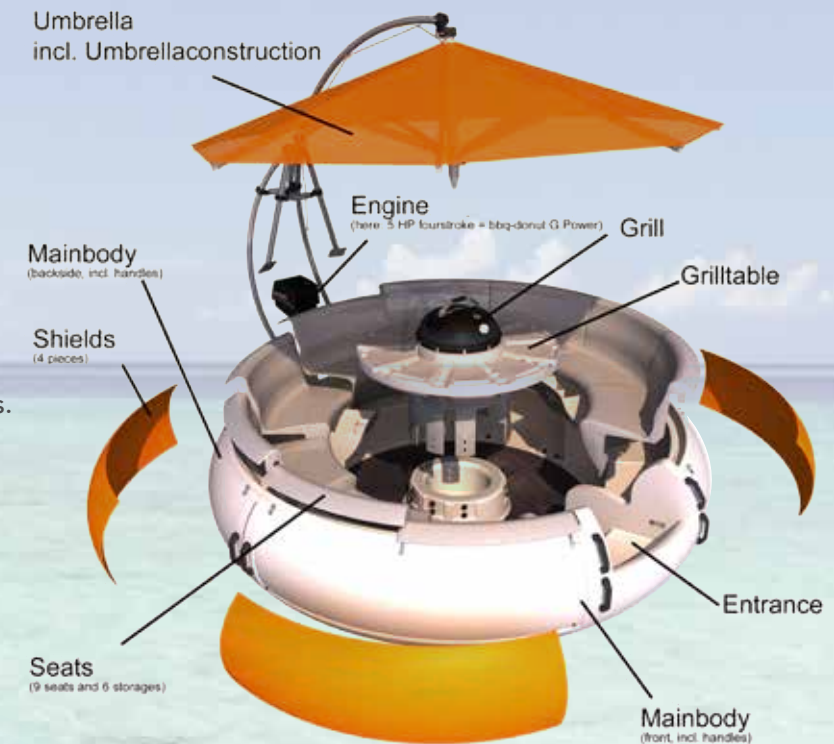
**With CE mark, declaration of conformity and GS-examination you are always on the safe side:** We guarantee that even the bbq-donut® complies with the essential health and safety requirements of all relevant European Directives. The „German water Schiffsamt“ necessary documents are available to download on [www.artthink.de](http://www.artthink.de). **In all matters relating to the admission, our experienced service team will support you and answer your questions.**

 <small>Entwicklung   Design   Vertrieb</small>	
<b>Hersteller:</b>	artthink GmbH Nobelstraße 3 D-48477 Hörstel, Germany Tel: 0049 (0) 5459 / 97297-120 Fax: 0049 (0) 5459 / 97297-222 info@artthink.de
<b>Marke:</b>	bbq-donut®
<b>Typ:</b>	bbq-donut®, Typ 1
<b>Kategorie:</b>	<b>C+D</b>
<b>Max:</b>	 <b>PS: 25 / KW: 18,3</b>
<b>Max:</b>	 <b>10</b> +  +  = <b>1.000kg</b>
<b>CE</b>	
<b><a href="http://www.artthink.de">www.artthink.de</a></b>	



## Technical Data

<b>Dimensions</b>	Diameter: 3,60 m, Height: 2,80 m
<b>Empty weight:</b>	ca. 750 kg
<b>Total weight:</b>	750 kg + max. 1000kg = 1750 kg
<b>Maximum speed:</b>	Maximum speed: Model E.Power: 3-4km /h, model G.Power 5-6 km / h (5hp), 7-8 km / h (8PS)
<b>Seats:</b>	for up to 10 people
<b>Storage areas:</b>	6 pieces à 48 Liter
<b>Handles:</b>	10
<b>Umbrella construction:</b>	Stainless steel (V4A), welded or connected by plastic clips.
<b>Max. wind power:</b>	The bbq-donut® operation must be stopped in case of windpower higher of "4"
<b>Swell:</b>	Safe handling and wave height of 40-50 cm (1,3ft – 1,7ft)
<b>Drive:</b>	Electric outboards Alternative: 5 hp petrol outboards
<b>Grill unit:</b>	Smoke poor charcoal grill (diameter 58cm )





# Technical Data

## Selected material

The lasting value of the bbq-donut® is due to outstanding material selection. The UV-resistant plastic ensures a strong color fastness.

### Main floating body:

Polyethylene (PE) with high UV protection and antistatic additive.

### Seats, compartements, shields, grilltable:

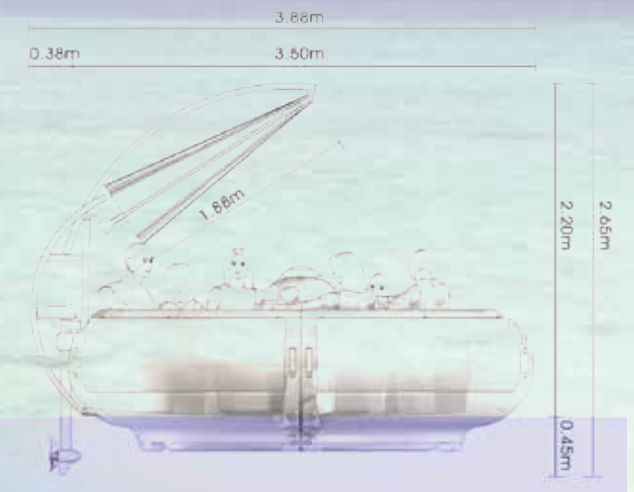
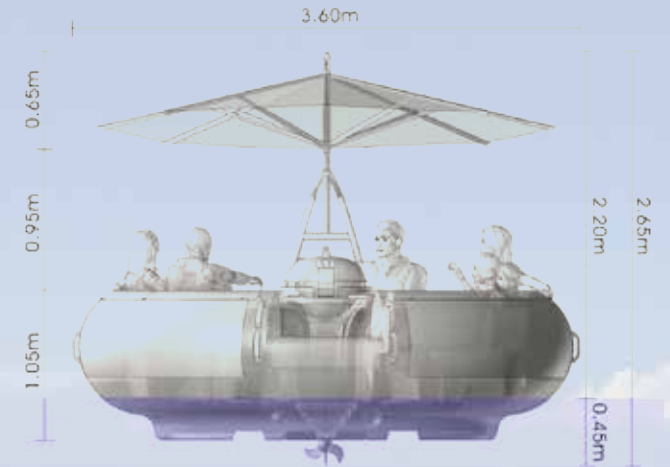
ABS PMMA, UV-protected, highglossy and scratchesave surface

### Umbrella construction

Stainless steel (V4A)

### Umbrella:

Translucent material, can be printed with your advertisement



## Model Range



### No Drive

**Use:**

- for boat owners who already own a suitable drive
- as rentable event boat
- Extension of an existing boat fleet

**Fields of use:**

- depends on the engine used

**Basic**



### incl 5hp outboard

**Use:**

- as rentable event boat
- Extension of an existing boat fleet

**Fields of use:**

- flowing waters (Rivers or seas)
- Waters where the use of gasoline engines is allowed

**G.Power**



### including electric drive

**Use:**

- as rentable event boat
- Extension of an existing boat fleet

**Fields of use:**

- Lakes or rivers with low flow
- Waters where the use of gasoline engines is not allowed

**E.Power**



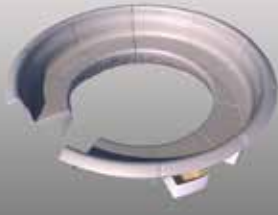
## Serial delivery

The following parts are included as standard in the delivery of the bbq-donut®

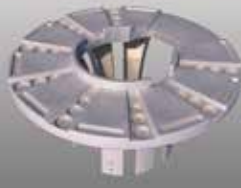
1. 2x Main floating body incl. handles and seal, 4 shields
2. 9x seats incl. 6 x compartements underneath the seats
3. Grilltable incl. Grilltisch space for cutlery, Plates and Drinks
4. Grill (Diamenter 58cm)
5. Orange or white umbrella with stainless steel holding
6. Drive



1.



2.



3.



4.



5.



6.



## Smart Accessories



### Umbrella protective cover

#### Perfectly packaged!

The parasol can be protected very easy with the screen protective cover. That was, it is also well protected from wind and weather.



### Beverage bowl

#### Get the party started!

Put ice cube & pure drinks in and get going – the ultimate party fun on the water. Easy-care plastic - durable and practical.



### Tarpaulin

#### The donut® is having a break!

No chance for dirt and rain! The tarpaulin protects the bbq-donut® after use reliable against weather and environmental influences.



### Table top

#### No desire to grill?

Lunch and dinner with a difference?  
Use the table instead of the grill and ready is the floating restaurant table.





## Trailer

### Easy transportation on land.

Discover the newly developed bbq-donut® trailer! The device can be easily transported on the road, mounted on the trailer. And the splashdown is very easy, also!



## Soundsystem JACK

### Compact and flexible sound

The entry model is hidden in a drawer and can easily be taken from boat to boat. The sound system is equipped with its own power supply and is recharged after use in a 230V (110V) outlet. By CD, MP3 or radio almost all music requests of your guests are satisfied.



## LED umbrella lightsystem

### Evocative moments guaranteed

The rainbow colors of light take a ride at dusk to unforgettable experience. Four multicolored LED strips are fixed on the struts of the umbrella. This allows to set nearly every color easily by a remote control. We will gladly provide you with an individual offer. (additional electric necessary).





## Shield and umbrella prints

### Customize your bbq-donut®!

Get an attractive additional income through the rental of advertising space. The four outer Shields can be pasted all over with advertising prints. On request, we will give you tips on how you can go specifically to find sponsors. Also, the umbrella of the bbq-donut®Type2 can be provided with printed advertising. Due to different printing techniques, we like to make you an individual offer.



## Position lights

### Brings the beam to the donut!

The position lights meets international water and Shipping Policy: red-green lamp, toplight as well as taillight. A must for use on waterways (additional electric necessary).



## Additional on-board electrical

### Extra Power for some accessories

The additional on-board electrical system consists of a battery and a built-in charger. LED screen lighting and the position lights have to be connected to work. The additional on-board electrical system is mandatory for all three models when the LED screen lighting and / or the lighting or the position will be chosen.



## Folding anchor

### Resting on the high seas

You found a cozy spot on the water? Put the anchor into the water and drift times ... The simple folding anchor is equipped with a 20m line and is very easy to handle.





## Maintenance & Service

High quality materials make the bbq-donut® very easy to clean. When cover and screen protector are used consistently, cleaning with sponge and water is enough. Due to the integrated water drain hole cleaning water can be removed quickly and easily. Tougher stains are easy to remove with commercial plastic cleaner. At season's end, we recommend an annual engine check - so you can start full steam ahead for the next year.

**Good to know: When you purchase you will receive your very own owner's manual. There you will find many useful tips and information around the bbq-donut®.**

## Team

Your success is our goal. Best service is the reflection of our passion for exceptional boat. This is why our team gives all its best every day. What can we do for you? We will find it out at a personal interview.

We cordially invite you to a non-binding test drive.

Experience the bbq-donut® live and visit simultaneously, the manufactory at the production site Horstel.

We look forward to meet you!





# How to merchandise my new bbq-donut® Station?

As an additional service we do offer professional help when it comes to developing an individual Logo for your Station, Shieldprints, Business Cards, Flyer, Brochures, Merchandising Products or a new Facebook Identity.

A professional optical appearance will complete your new business concept and will help you to reach your target group. No matter if i.e. imagebrochures, posters, a beachflag, stickers or anything else is needed, everything will be perfectly fitted to your optical appearance and look like all of a piece.

Mail to  
[bbq-donut@grafik-bewegt.de](mailto:bbq-donut@grafik-bewegt.de)

## Marketingpackage 1

699,- €

- Logo development (3 Alternatives) • 1000 Business Cards
- 1000 Imageflyer DIN-Lang 6-sides
- Header Facebook

## Marketingpackage 2

1099,- €

- Logo development (3 Alternatives)
- Printable Layouts/Files for Donut@Shieldprint
- 1000 Business Cards. • 1000 Writing Paper Sheets
- 1000 Imageflyer DIN-Lang 6-sides • Header Facebook
- 1000 Stickers • 1 Beachflag 2,70 m

Those Packages are „Standard-Offers“. If you plan on larger campaigns we are here to support you in conceptual and graphical realization, also when it comes to your new Website i.e. Dont hesitate to contact us!



# Thank you for your attention!

**We would be pleased hearing from you.**

## Headquarters

artthink GmbH, Nobelstraße 3, D-48477 Hörstel

## Contact person: Dipl. Ing. Sebastian Schmitt

Phone: +49 (0) 54 59 / 97 29 71 13

Fax: +49 (0) 54 59 / 97 29 72 22

Mobile: +49 (0) 173 / 8918364

E-Mail: [s.schmitt@artthink.de](mailto:s.schmitt@artthink.de)

Web: [www.artthink.de](http://www.artthink.de) or [www.bbq-donut.de](http://www.bbq-donut.de)

