

artthink  
GERMAN QUALITY MANUFACTURER

THE PARTY KEEPS MOVING!

# bbq-donut<sup>®</sup> Type 2



[www.bbq-donut.de](http://www.bbq-donut.de)

# Content

Preamble	..... 3	Serial delivery	..... 11
New blood	..... 4	Smart accessories	..... 12-15
Fields of applications	..... 5	Security and authorization	..... 16
Events on the water	..... 6	Maintenance and service	..... 17
Technical details	..... 7-8	Our team	..... 17
Measured views	..... 9	Contact	..... 18
Models	..... 10		





# Welcome

## **Dear reader ...**

Here we have compiled the most important information around the bbq-donut®Type2. You request a specially tailored offer to your needs? Contact us by Phone +49 (0) 54 59 / 97 29 71 13 or E-Mail: [s.schmitt@artthink.de](mailto:s.schmitt@artthink.de). We are always at your disposal.

**Faster to your success with the brand new bbq-donut® Type2!**  
On the following pages you will learn how easy it is.



Find us on facebook!

# The bbq-donut® family receives new blood...

... namely the **bbq-donut®Type 2!**

The smaller version of the innovative and globally successful bbq-donut® is the entry model for all who want to succeed faster. Design in known shape, place for up to 8 people and an unbelievable price make Type2 even more attractive for the rental business.

Also take advantage of the profitable uses. Equipment and engine are specially adapted to your needs. Smart accessories are completing the range. From family outings to romantic candle light dinner on the water – the perfect event is guaranteed. That way, you will reach different target groups and to secure new attention. **And: Exceptional recreational fun is guaranteed!**



# Fields of applications

## Once around the globe!

**From Möhnesee in North Rhine-Westphalia (Germany) to the Caribbean islands:**

**On all continents and in over 40 countries the bbq-donut® is already successfully used on the water.**

Basically the bbq-donut® should be used where pedal boats are available, too. However, it is also possible to use the bbq-donut® near the beach and in harbors or bays. There, the use of 5-8 hp gasoline engines is required.

**Both of our commercial and private clients are very satisfied with their bbq-donut®! For example:**

- Boatrentals
- Amusement parks
- Lakes
- Campgrounds
- Eventagencies
- Hotels and restaurants with direct water access
- Private Persons all over the world who want to have fun on the water with family and friends





## Events on the water

### No limits to your creativity!

With our smart accessories you can flexibly respond to customer needs and offer individual arrangements on the water.

There is something suitable for every target- and agegroup.

In general, the bbq-donut® is rented hour for the following events:

- Birthday parties
- Family outings
- Wellness
- Trainings
- Stag and hen parties
- special events
- club meetings
- Company parties
- and many more...



## Technical details

**Dimensions:**

Diameter 2,85m (9.4ft)

**Empty weight:**

415 kg (915 lb)

**Total weight:**

415kg (915lb) + max. 800kg (1764lb) load (8 people)

**Maximum speed:**

Maximum speed: Model E.Power: 3-4km /h, model G.Power 5-6 km / h (5hp), 7-8 km / h (8PS)

**Seats:**

for up to 8 people

**Storage areas:**

4 underneath the seats

**Handles:**

8 and integrated reeling

**Umbrella construction:**

Stainless steel (V4A), welded or connected by plastic clips.

The umbrella can be folded quickly if needed.

**Max. wind power:**

The bbq-donut® operation must be stopped in case of windpower higher of "4"

**Swell:**

Safe handling and wave height of 40-50 cm (1,3ft – 1,7ft)

**Drive:**

Electric outboards

Alternative: 5 hp petrol outboards

**Grill unit:**

Smoke poor charcoal grill (diameter 48cm > 1,6ft)



## Technical details

### Selected material

The lasting value of the bbq-donut ® is the due to outstanding material selection.

The UV-resistant plastic ensures a strong color fastness.

#### Main floating body:

Polyethylene (PE) with high UV protection and antistatic additive and integrated water drain plug.

#### Seat body:

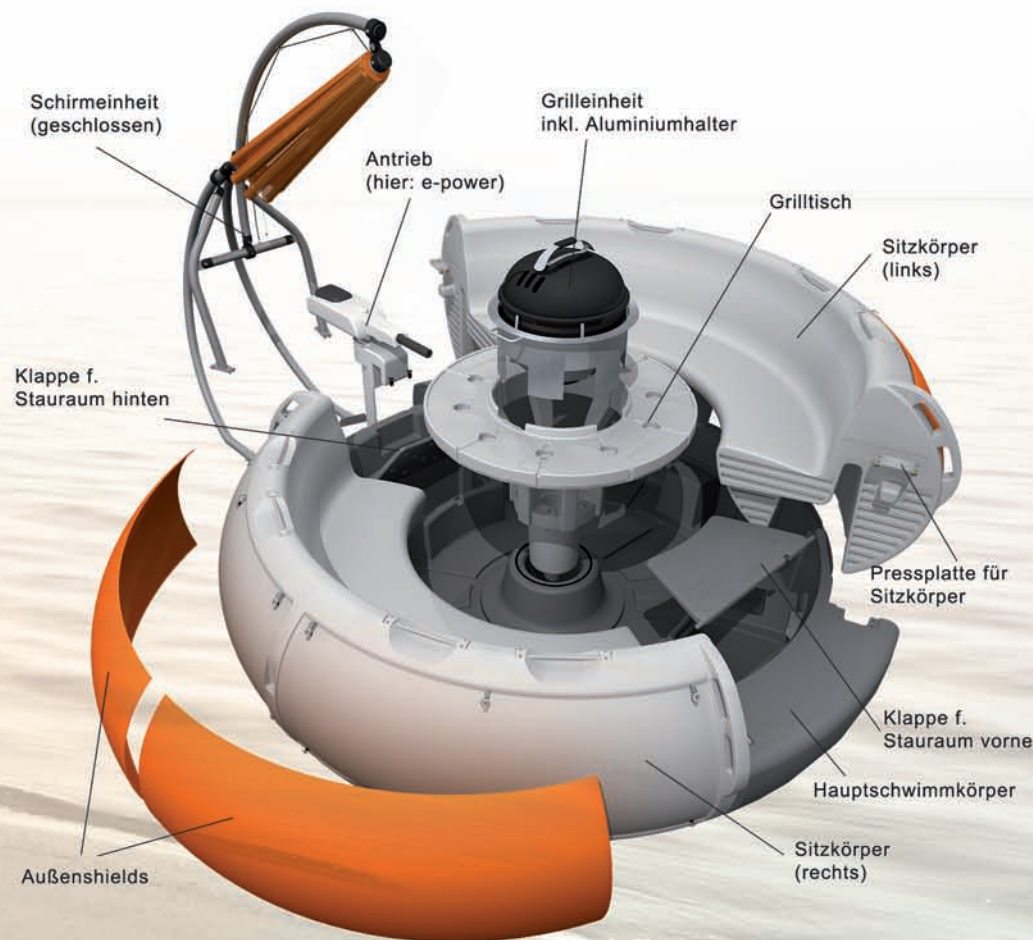
Polyethylene (PE) with strong UV protection and anti-static Additive and integrated handles and railing

#### BBQ table, table feet:

Polyethylene (PE) with strong UV protection and anti-static additive

#### Umbrella:

Translucent tissue, can be printed with advertising





## Technical details

The operating temperature of the bbq-donut ® and its materials ranges from -30 ° C to +60 ° C.

### Notification:

The measurements may be differ due to temperature-induced material shrinkage by approx. 1-2%.

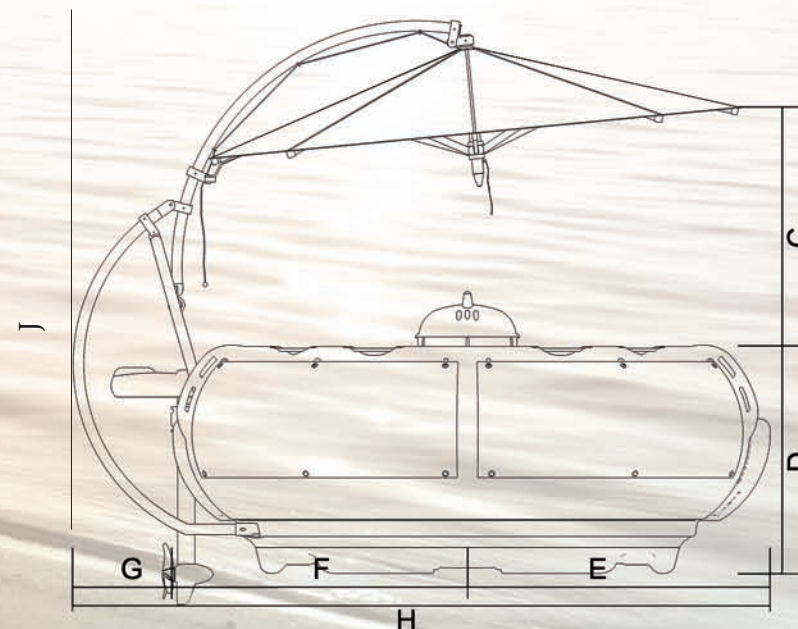
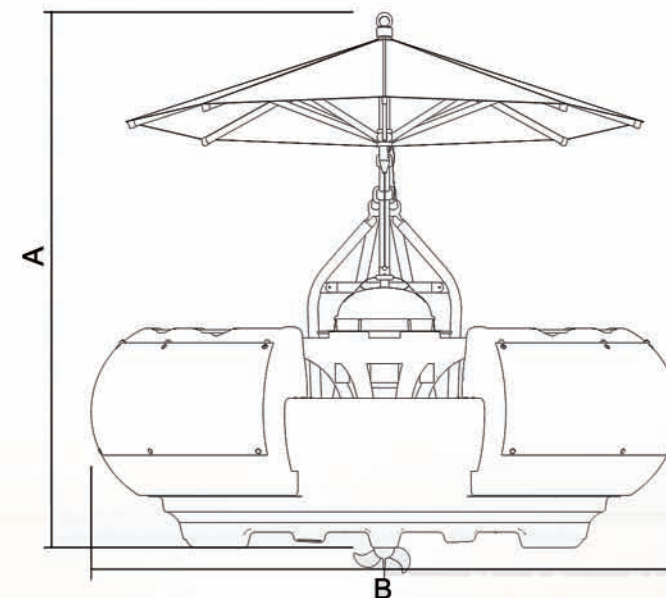
### Weight:

bbq-donut ® Type2 empty weight: 415 kg (915 lb) (model: Basic)

Single main float: 145 kg (320 lb)

Single seat body: 70kg (155 lb) (without shields)

- A: 2600 mm (102,3 inch)
- B: 2850 mm (112,2 inch)
- C: 1100 mm (43,3 inch)
- D: 1060 mm (41,7 inch)
- E: 1425 mm (56,1 inch)
- F: 1425 mm (56,1 inch)
- G: 460 mm (18,1 inch)
- H: 3310 mm (130,3 inch)
- J: 2300 mm (90,5 inch) Headroom



## Models



**bbq-donut**  
Type2  
Basic

### No drive

#### Use:

- for boat owners who already own a suitable drive
- as rentable event boat
- Extension of an existing boat fleet

#### Fields of use:

- depends on the engine used



**bbq-donut**  
Type2  
G.Power

### incl 5hp outboard

#### Use:

- as rentable event boat
- Extension of an existing boat fleet

#### Fields of use:

- flowing waters (Rivers or seas)
- Waters where the use of gasoline engines is allowed



**bbq-donut**  
Type2  
E.Power

### including electric drive

#### Use:

- as rentable event boat
- Extension of an existing boat fleet

#### Fields of use:

- Lakes or rivers with low flow
- Waters where the use of gasoline engines is not allowed

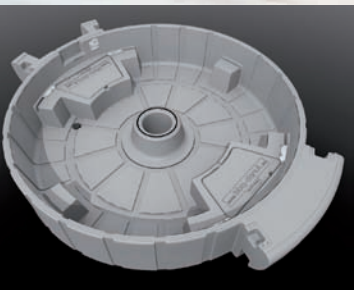




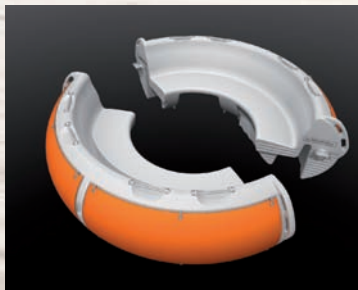
## Serial delivery

The following parts are included as standard in the delivery of the bbq-donut®Type2:

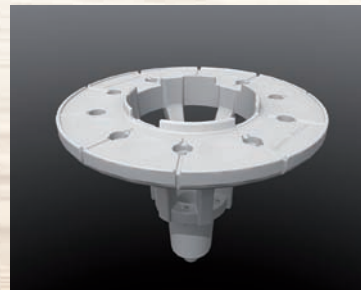
1. Main floating body (1x, including 2xcover for storage and 1x water drain plug)
2. Seat body including railing and color Shields (2x, with holders for Shields and hooks for tarpaulin and 2x Shield)
3. Grill Table (1x, including screw)
4. Grill unit including aluminum holder (1x, including pre-installed grill)
5. Umbrella unit (1x, including stainless steel construction and folding screen)
6. Drive unit (no drive for Basic, electric outboard motor for E.Power, gasoline outboard engine for G.Power)



1.



2.



3.



4.



5.



6.



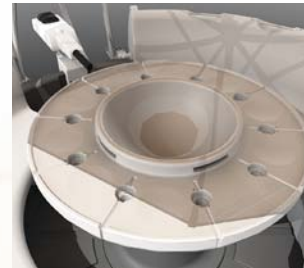
## Smart accessories



### Umbrella protective cover

**Perfectly packaged!**

The parasol can be protected very easy with the screen protective cover. That was, it is also well protected from wind and weather



### Beverage bowl

**Get the party started!**

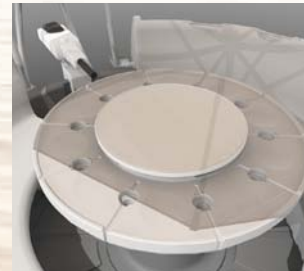
Put ice cube & pure drinks in and get going – the ultimate party fun on the water. Easy-care plastic - durable and practical.



### Tarpaulin

**The donut® is having a break!**

No chance for dirt and rain! The tarpaulin protects the bbq-donut ® Type2 after use reliable against weather and environmental influences.



### Table top

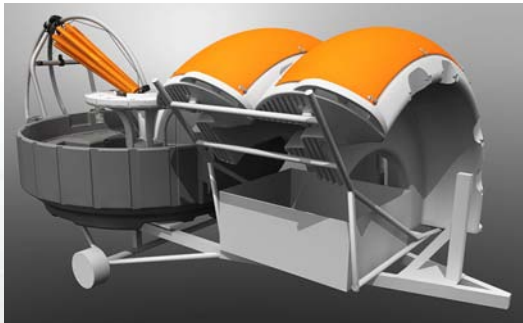
**No desire to grill?**

Lunch and dinner with a difference?  
Use the table instead of the grill and ready is the floating restaurant table.





## Smart accessories



### Trailer

#### Easy transportation on land.

Discover the newly developed bbq-donut®Type2 trailer! The device can be easily transported on the road, mounted on the trailer. And the splashdown is very easy, also!



### Soundsystem JACK

#### Compact and flexible sound

The entry model is hidden in a drawer and can easily be taken from boat to boat. The sound system is equipped with its own power supply and is recharged after use in a 230V (110V) outlet. By CD, MP3 or radio almost all music requests of your guests are satisfied.



## Smart accessories



### Storage drawers

#### Additional storage space under the seats

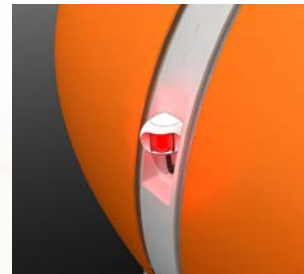
A useful extra: You can choose 4 storage drawers for your unit. Your guests can store all their goods which are needed on board.



### Shield and umbrella prints

#### Customize your bbq-donut®!

Get an attractive additional income through the rental of advertising space. The four outer Shields can be pasted all over with advertising prints. On request, we will give you tips on how you can go specifically to find sponsors. Also, the umbrella of the bbq-donut®Type2 can be provided with printed advertising. Due to different printing techniques, we like to make you an individual offer.



### Position lights

#### Brings the beam to the donut!

The position lights meets international water and Shipping Policy: red-green lamp, toplight as well as taillight. A must for use on waterways (additional electric necessary).



### LED umbrella lightsystem

#### Evocative moments guaranteed

The rainbow colors of light take a ride at dusk to unforgettable experience. Four multicolored LED strips are fixed on the struts of the umbrella. This allows to set nearly every color easily by a remote control. We will gladly provide you with an individual offer. (additional electric necessary).





## Smart accessories



### Additional on-board electrical

#### Extra Power for some accessories

The additional on-board electrical system consists of a battery and a built-in charger. LED screen lighting and the position lights have to be connected to work. The additional on-board electrical system is mandatory for all three models when the LED screen lighting and / or the lighting or the position will be chosen.



### Folding anchor

#### Resting on the high seas

You found a cozy spot on the water? Put the anchor into the water and drift times ... The simple folding anchor is equipped with a 20m line and is very easy to handle.



### Rechargeable battery (E.Power)

#### Extra power for long rentals

As standard, the bbq-donut@type2 E.Power is equipped with a 320 Wh Li-ion battery and 2 x 520 Wh Li-ion batteries. However, if you need extra battery for even longer rides, then the additional spare battery is just right for you.





## Security and authorization

Often we are asked if a round boat can also go straight. This is possible because of the 4 integrated lanes on the bottom of the main floating body. The bbq-donut®Type 2 is easy and well to maneuver. Even people who have little experience in driving boats will have no problems driving it. This confirms the worldwide use of bbq-donut® as a rental boat. The bbq-donut® can be operated in the water categories C and D. The serial engines all have less than 6 hp, so no license is required.

**With CE mark, declaration of conformity and GS-examination you are always on the safe side:**

We guarantee that even the bbq-donut®Type 2 complies with the essential health and safety requirements of all relevant European Directives. The „German water Schiffsamt“ necessary documents are available to download on [www.artthink.de](http://www.artthink.de).

**In all matters relating to the admission, our experienced service team will support you and answer your questions.**





## Maintenance and service

High quality materials make the bbq-donut®Type 2 very easy to clean. When cover and screen protector are used consistently, cleaning with sponge and water is enough. Due to the integrated water drain hole cleaning water can be removed quickly and easily. Tougher stains are easy to remove with commercial plastic cleaner. At season's end, we recommend an annual engine check - so you can start full steam ahead for the next year. **Good to know: When you purchase you will receive your very own owner's manual. There you will find many useful tips and information around the bbq-donut®.**

## Our team

Your success is our goal. Best service is the reflection of our passion for exceptional boat. This is why our team gives all its best every day. What can we do for you? We will find it out at a personal interview. We cordially invite you to a non-binding test drive. Experience the bbq-donut®Type 2 live and visit simultaneously, the manufactory at the production site Horstel. **We look forward to meet you!**



# Thank you for your attention!

**We are always available for you:**

## Headquarters

artthink GmbH

Nobelstraße 3

D-48477 Hörstel

Contact person: Dipl. Ing Sebastian Schmitt

Telefon: +49 (0) 54 59 / 97 29 71 13

Fax: +49 (0) 54 59 / 97 29 72 22

Mobile: +49 (0) 173 / 8918364

E-Mail: [s.schmitt@artthink.de](mailto:s.schmitt@artthink.de)

Web: [www.artthink.de](http://www.artthink.de) oder [www.bbq-donut.de](http://www.bbq-donut.de)

